



DECISIONS WITH DATA

BUSINESS INTELLIGENCE FOR YOUR ORGANISATION

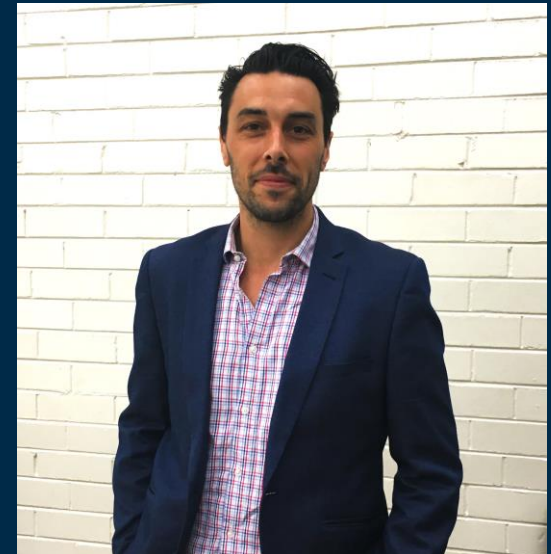
Samuel Headberry, Senior Consultant

WHO AM I

SAM HEADBERRY

SENIOR CONSULTANT, INFOXCHANGE

- » 12 years in the NFP sector
- » Focus on housing and homelessness
- » Data geek
- » Believes Business Intelligence will drive better results for service users
- » Wants a Harley Davidson



BUSINESS INTELLIGENCE

IN THE NOT FOR PROFIT SECTOR

Business intelligence

“Business intelligence (BI) leverages software and services to transform data into actionable intelligence that informs an organization’s strategic and tactical business decisions.”

Source: CIO Insider, accessed 1 November 2017



Why is it important?

Having access to the right intelligence and insights ensures you:

- » Demonstrate the impact of your services
- » You are informed on your services and service provision
- » Supports your organization define its strategy
- » Support your organization define areas of competitive advantage
- » Identify areas of internal and external strengths that can be leveraged
- » Support your organization be more competitive in funding opportunities



Who would use it and why

- » Senior managers and Executive
 - Generate insights to determine organizational strategy
 - Monitoring organizational performance
- » Middle management
 - Identify trends and needs in service delivery
 - Staff management
- » Case managers/ direct service workers
 - To see the impact of their work
- » Administration
 - For reporting and compliance purposes





Power BI



plotly



Google Data Studio

DATA VISUALISATION TOOLS

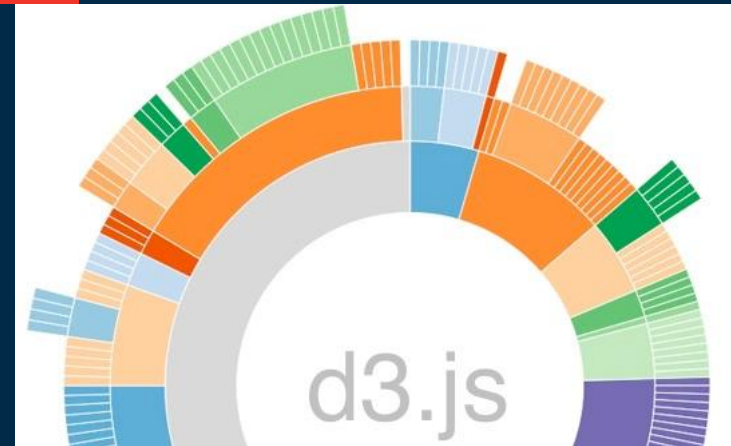


+ a b l e a u[®]

QlikView



Chart.js





Power BI

PowerBI Building Blocks

Data

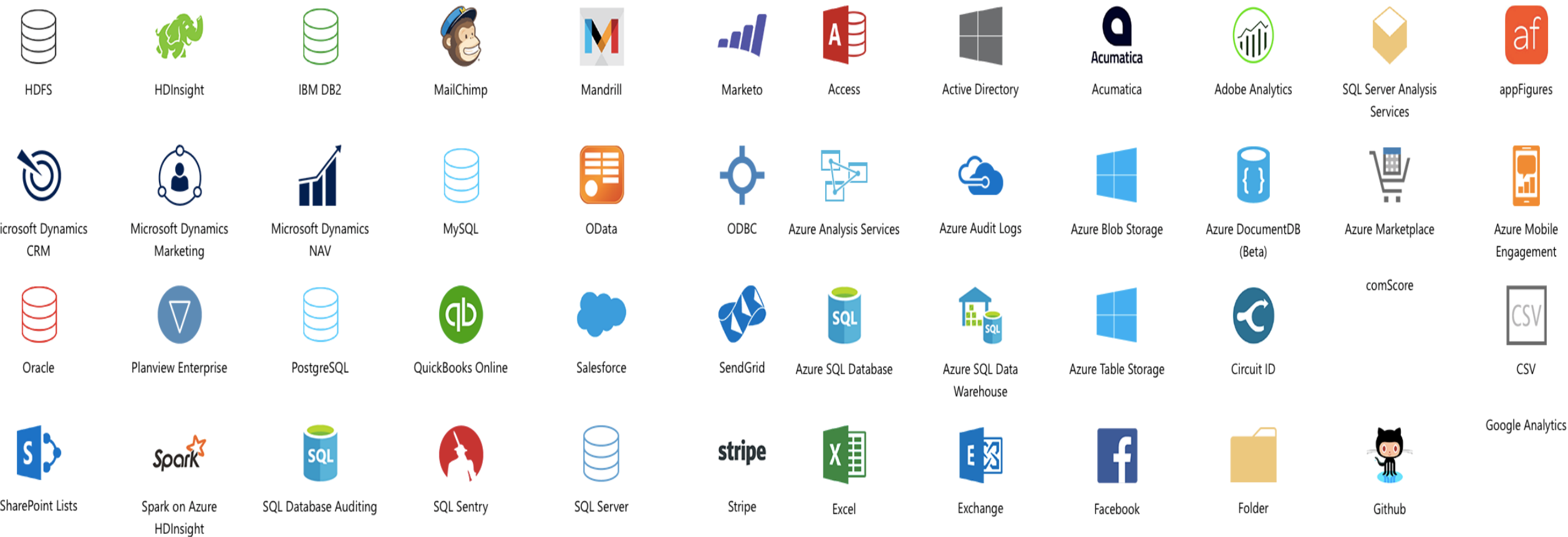
Visualisations

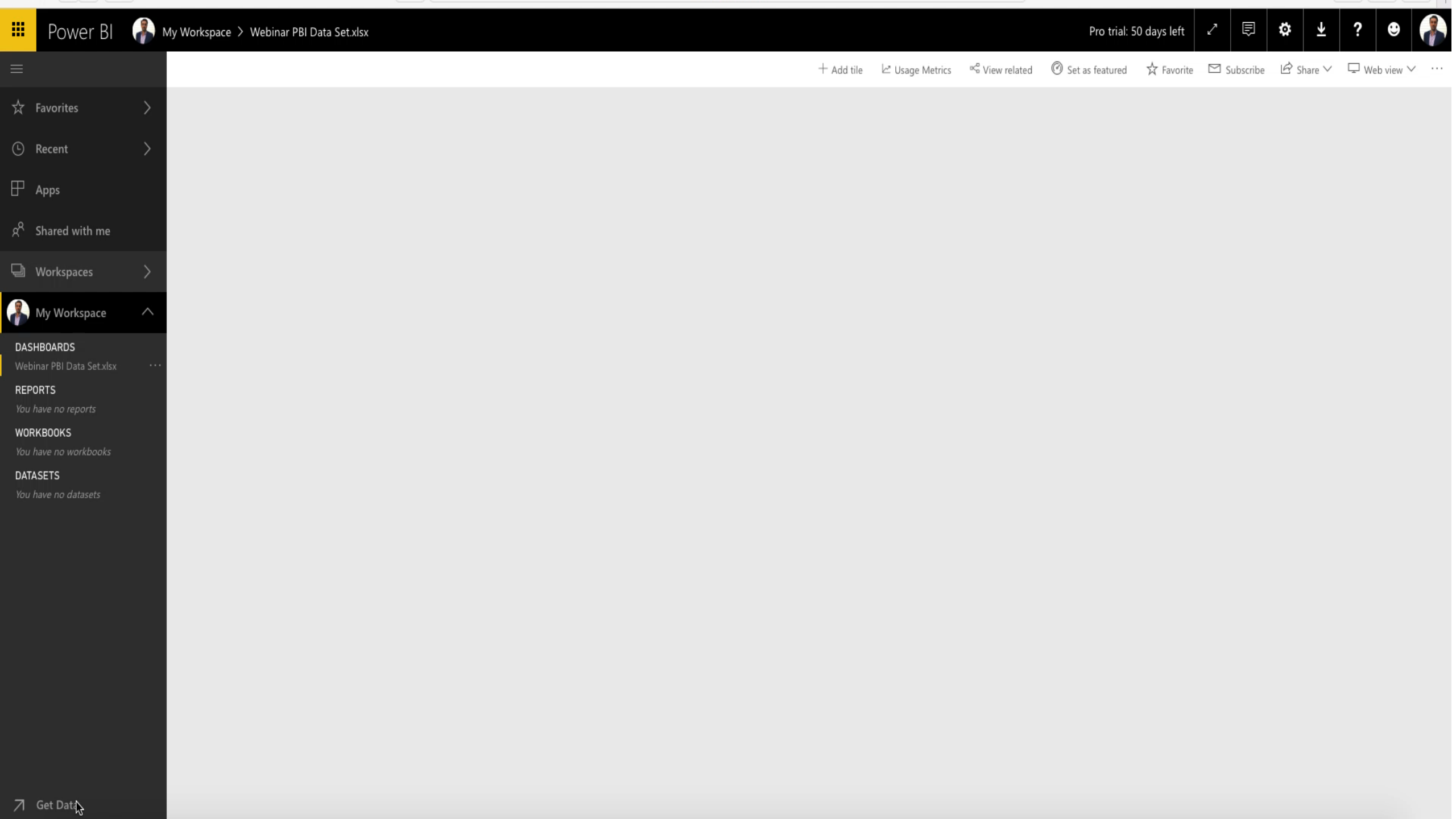
Reports

Dashboard

DATA

Data





VISUALISING DATA

Data comparison charts

Data reduction charts

Comparison

Composition

Distribution

Evolution

Relationship

Profiling

Bars



Pie



Histogram



Line



Scatterplot



Grouped bars



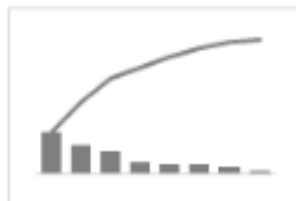
Dot plot



Bullet



Pareto



ID Scatterplot



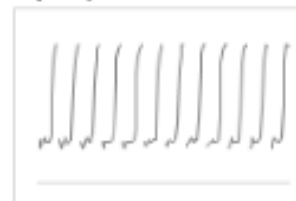
Horizon



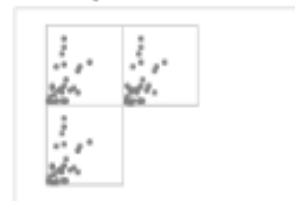
Connected Scatterplot



Cycle plot



Scatterplot matrix



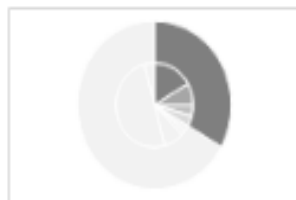
ID Scatterplot



Heat map



Multidimensional Pie



Boxplot



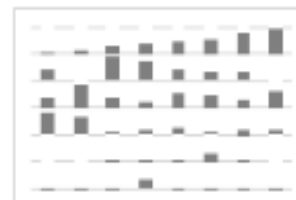
Step



Bubble



Reorderable matrix



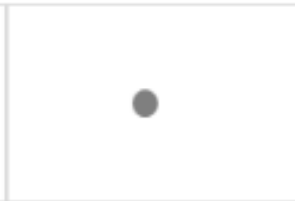
Horizon



Slope



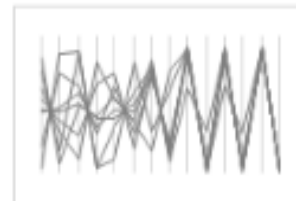
Alert



Connected Scatterplot



Parallel Plot



Trellis



Power BI

My Workspace > Webinar PBI Data Set

Pro trial: 50 days left

File

View

Reading view

Explore

Text box

Shapes

Visual interactions

Refresh

Duplicate this page

Save

Favorites

Recent

Apps

Shared with me

Workspaces

My Workspace

DASHBOARDS

Webinar PBI Data Set.xlsx

REPORTS

You have no reports

WORKBOOKS

You have no workbooks

DATASETS

Webinar PBI Data Set

Visualizations

Visualizations icons

Values

Drag data fields here

Filters

Page level filters

Drag data fields here

Drillthrough filters

Drag drillthrough fields here

Report level filters

Drag data fields here

Fields

Search

Webinar PBI Data ...

Age

ATSI

Client id

Gender

Nationality

Service locati...

support closed

support close...

support open

support open...

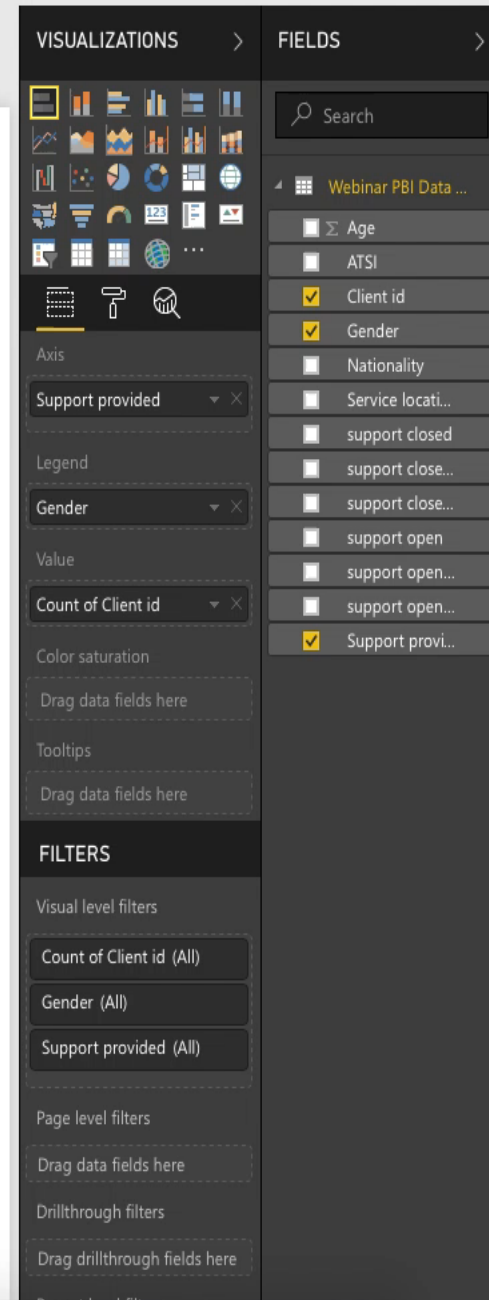
support open...

Support provi...

Get Data

Page 1


REPORTS




DASHBOARD


Developing a dashboard


Power BI

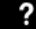
 My Workspace


Pro trial: 50 days left















Favorites

Recent

Apps

Shared with me

Workspaces

 My Workspace

DASHBOARDS

You have no dashboards

REPORTS

ATSI client count

Decisions with data - Gender by sup...

Geospatial

Service location

Support by month


Support provided by month closed

WORKBOOKS

You have no workbooks

DATASETS

Webinar PBI Data Set

 Get Data

Search content...

Dashboards

Reports

Workbooks

Datasets


NAME

ACTIONS

OWNER

Showing 0 item(s)

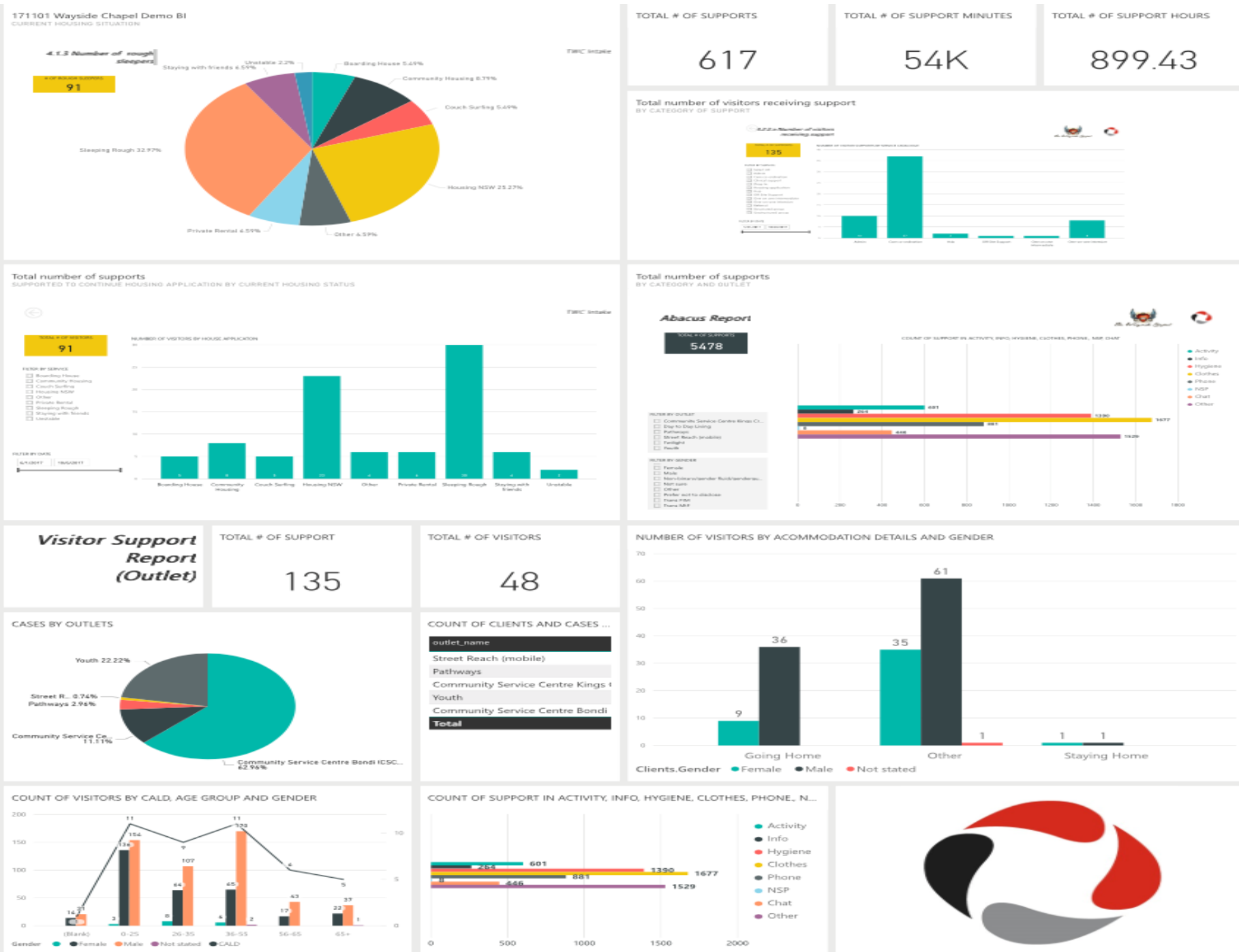
Name (A-Z)



You don't have any dashboards

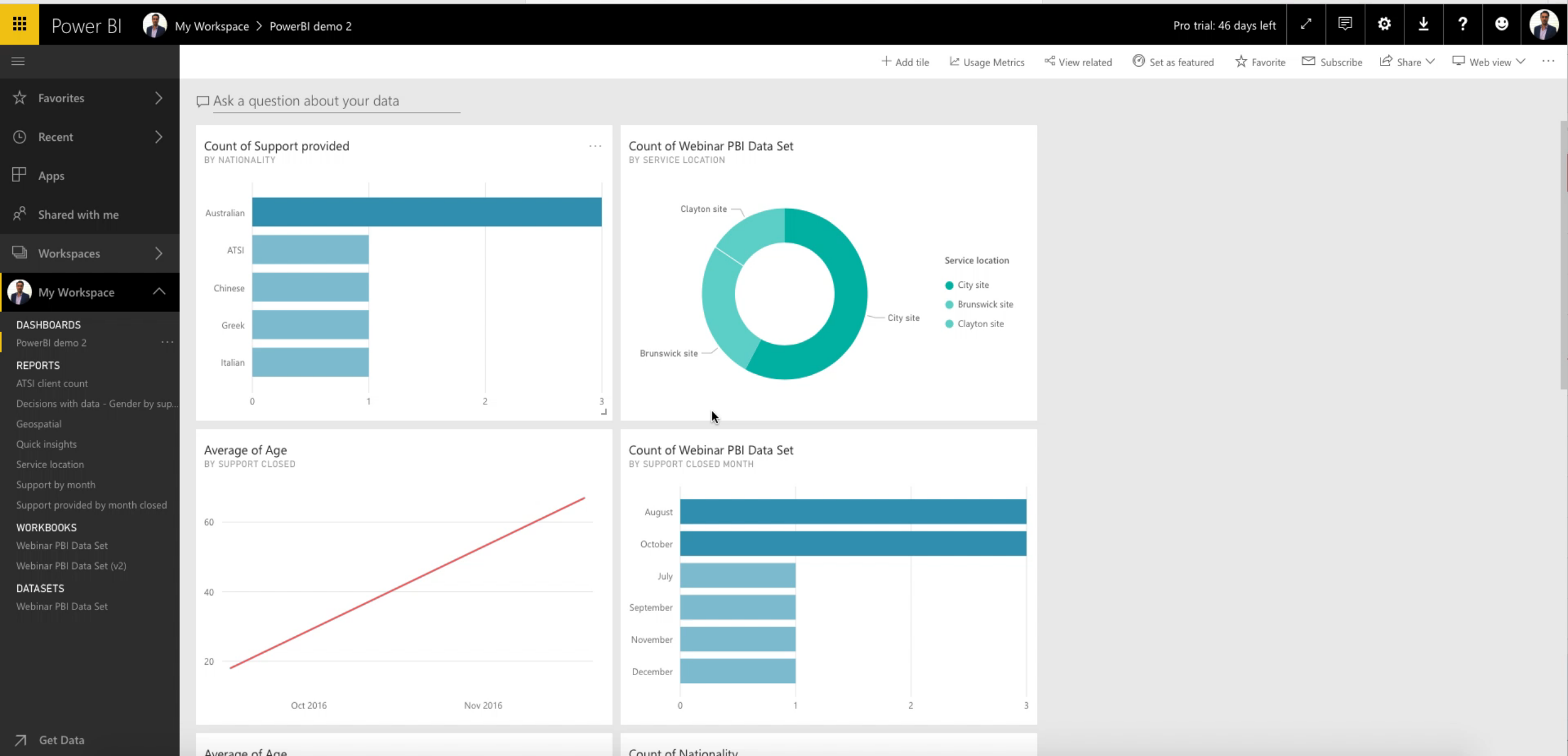
All dashboards in this workspace will be here.

Dashboard example

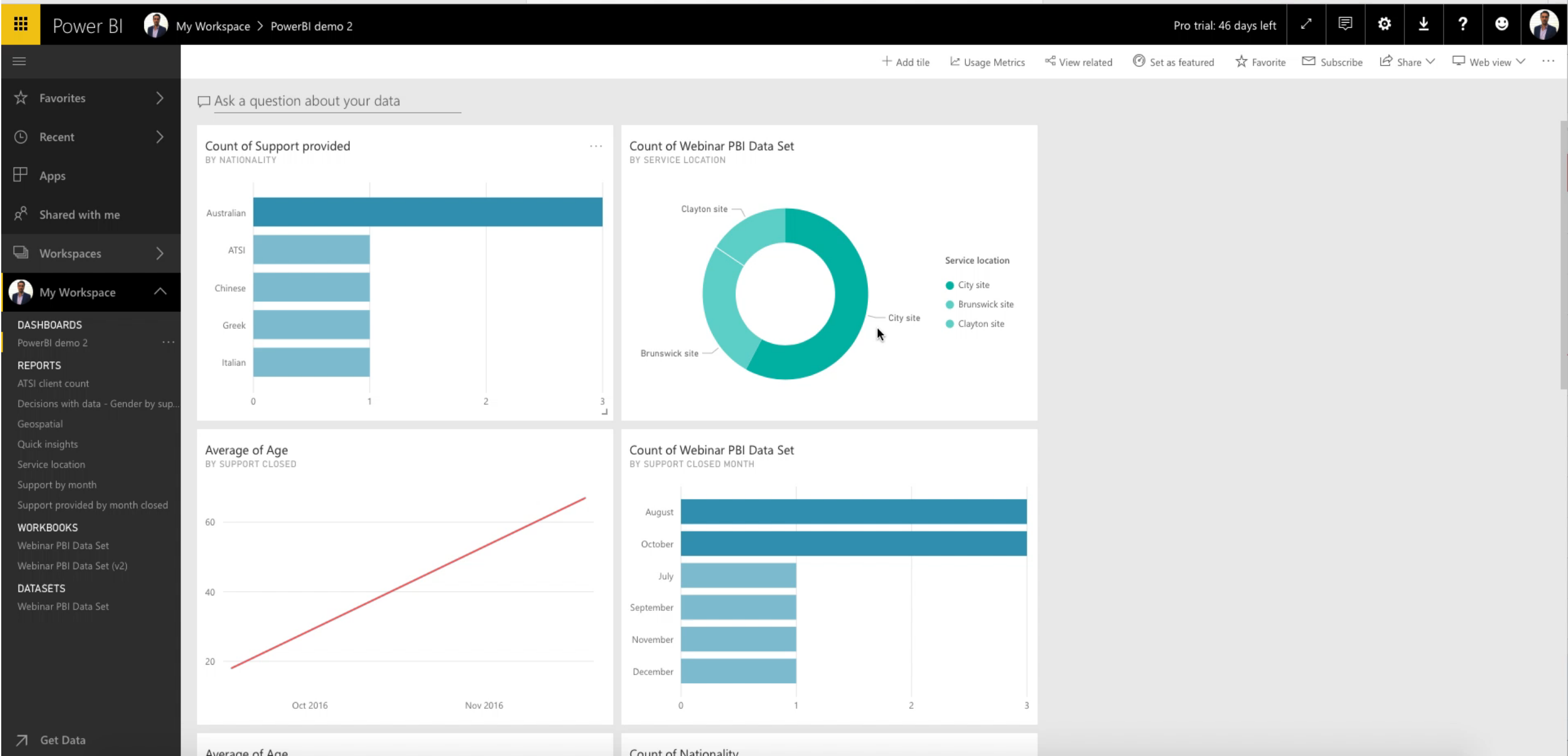


ADVANCED FEATURES

Querying data (Q & A)



Sharing Data



Quick insights

Power BI

My Workspace

Pro trial: 50 days left

Favorites

Recent

Apps

Shared with me

Workspaces

My Workspace

DASHBOARDS

Webinar PBI Data Set.xlsx

REPORTS

You have no reports

WORKBOOKS

You have no workbooks

DATASETS

Webinar PBI Data Set

Get Data

Search content...

Dashboards

Reports

Workbooks

Datasets

NAME

☆ Webinar PBI Data Set.xlsx

Sam Headberry

+

Create

✓

Your dataset is ready!

Let Power BI help you explore your data.

[Get Quick Insights](#)

View dataset

Going deeper

- » Can query multiple data sources in a single report
- » Can perform advanced data analysis
- » Can query data sources in real time using API's and Odata
- » Can use DAX to undertake more advanced data modelling
- » Can undertake Big Data analysis using Spark and Azure HDInsight



Recap

» What we've covered today:

- Business Intelligence overview
- BI in the NFP space
- Introduction to PowerBI
- PowerBI building blocks
 - Accessing data
 - Visualizations
 - Reports
 - Dashboards
- Data Querying
- Data Sharing
- Quick insights
- Going deeper



THANK YOU

PLEASE GET IN TOUCH



Sam Headberry

Senior Consultant, ITSC

T 03 9417 0460

M 0413 016154

E sheadberry@infoxchange.org

